

USER MANUAL

BEAD LINE/BALL LINE

REVISION 3



AKVAGROUP™
EGERSUND NET

THANK YOU FOR CHOOSING EGERSUND NET

Our mission is to deliver solutions and services that optimise production and contribute to sustainable, cost-effective and safe fish farms. We place great emphasis on fish welfare, operational performance and profitability for our customers in everything that we do.

A bead line/ball line is equipment used to reduce the volume of a net, especially when collecting, sorting or treating fish.

Egersund Net is committed to producing high-quality, easy-to-use bead lines/ball lines, and in this user manual we describe how you should handle them.

We keep our manuals as user-friendly as possible. To achieve this, we rely on your feedback and on our collaboration with you as a user of our products. We highly value every suggestion we receive, as it helps us deliver more effective and safer equipment. You are most welcome to contact us if you have any comments or suggestions for improvement.

The user manual for bead lines/ball lines is available on our website www.egersundnet.no, and on our online equipment log Net-Reg at www.net-reg.no.

Together, we can help ensure that fish farming is an eco-friendly, sustainable and growing industry that produces safe and healthy seafood for the global market.

This user manual is designed to meet the requirements of Norwegian Standard 9415:2009 and the NYTEK regulations. Egersund Net reserves all rights to this user manual and its contents. Reproduction and distribution to third parties without our clearly expressed prior approval are not permitted. We reserve the right to correct any errors in the text or illustrations.

Warm regards,
Egersund Net

CONTENTS

1	INTRODUCTION.....	4
1.1	About the product.....	4
1.2	Symbol definitions	4
1.3	Contact information	4
2	CONSTRUCTION.....	5
3	OPERATION AND MAINTENANCE	6
3.1	Use of bead lines/ball lines.....	6
3.2	Risk assessments/special environmental conditions.....	8
3.3	Maintenance	8
3.4	Checklist	8

1 INTRODUCTION

1.1 About the product

A bead line/ball line is equipment used to reduce the volume of a net, especially when collecting, sorting or treating fish. Bead lines/ball lines usually comprise multiple floats strung onto a rope. The bead line/ball line is dragged under the net until the volume has been sufficiently reduced. The fish are then confined into a smaller area, making it easier to collect them from the floating collar.

1.2 Symbol definitions



REQUIREMENT: This symbol is placed next to text describing requirements.



NOTE: This symbol is placed next to text describing potential incidents and other aspects that you should be aware of.



TIP: This symbol describes tips and advice in connection with the installation and handling of bead lines/ball lines.



ESCAPE RISK: This symbol is placed next to text describing events and/or operations that may increase the risk of fish escaping.

1.3 Contact information

If you have any questions about bead lines/ball lines, please feel free to contact us.

Delivery and visiting address:

Egersund Net AS

Svanavågveien 30

NO-4374 Egersund, Norway

Tel: +47 51 46 29 60

E-mail: post@egersundgroup.no

www.egersundnet.no

2 CONSTRUCTION

The photos below show examples of bead lines/ball lines.

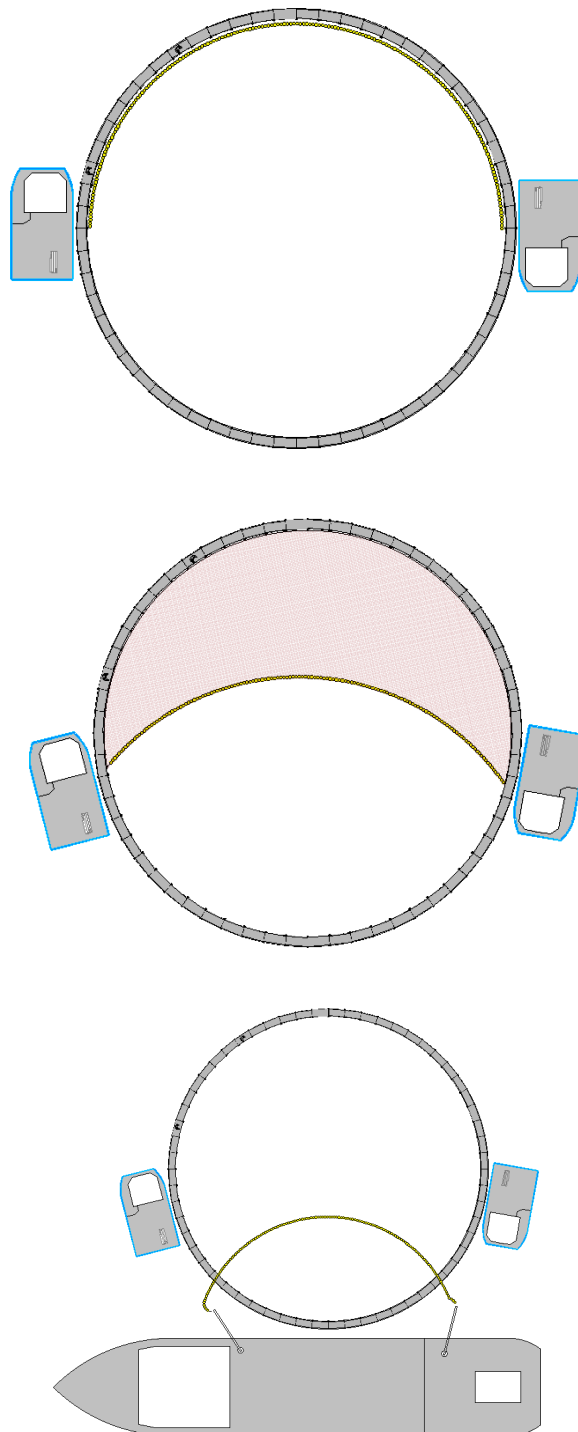


3 OPERATION AND MAINTENANCE

3.1 Use of bead lines/ball lines

- Procedures should be reviewed before operations begin. Personnel with the appropriate experience and competence must be responsible for the operation.
- Bead lines/ball lines should always be checked before use:
 - Any remnants of old rope must be removed.
 - If any balls/floats are found to be damaged (e.g. with nicks that could damage the net), these must be removed before use.
- Remove any load from weights under the net before starting the operation. Any loose objects or additional equipment, such as power cables or cleaner-fish shelters, must be secured or removed before starting the operation.
- All rope used between bead lines/ball lines and the cam or crane must be clean and undamaged. In addition, there must be no unnecessary knots or other objects that could get caught in the net.
- The dinghy is hoisted into the floating collar when you start to pull on the bead line/ball line, if weather and current conditions permit.
- Attach rope ends to the handrails of the floating collar (as loops). Thread the bead line/ball line through these. They will then slide close to the floating collar (on the outside of the net), instead of being pulled into it.
- ⚠ ■ When pulling on the bead line/ball line, the operation must be monitored.
- Pull on the line as slowly and carefully as possible, in order to minimise any risk of damage to the net and to safeguard fish welfare and HSE.
- ⚠ ■ Watch carefully and make sure that the bead line/ball line does not get caught in the netting.
- As far as possible, pull the bead line/ball line equally on both sides (it should not get stuck on one side).
- Any boats used to pull the bead line/ball line should be strategically placed to avoid “changing grip” backwards in order to move forwards.
- When collecting fish, always pull the bead line/ball line twice, to make sure that the net is completely empty of fish.
- After use, check the bead line/ball line to make sure it has not been damaged before storing it.

The illustrations below show the principles for using bead lines/ball lines.



3.2 Risk assessments/special environmental conditions



Bead lines/ball lines should only be used when weather and current conditions permit. Personnel with the right expertise must be responsible for the operation. Before the operation begins, procedures must be reviewed with all those involved.

Approved lifting equipment must be used and personal protective equipment worn.

3.3 Maintenance



When the bead line/ball line is not in use, it should be stored properly to prevent damage.

If the bead line/ball line is of no further use, it can be returned to any Egersund Net service facility, where it will be handled in accordance with our waste management procedures. When moving a bead line/ball line between locations, you must disinfect it.

3.4 Checklist

Before the bead line/ball line is used, it must be checked to ensure that it has no damage that may cause damage or holes in the net.

Check the following points before use:



Checklist item	What to inspect
Chafing	Check that there is no wear and tear to ropes, floats or loops.
Sharp edges	Check that there is no damage to components of the bead line/ball line that could cause holes in the net – such as nicks in the floats.

