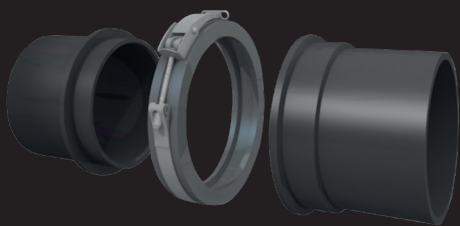


PS-couplings

The couplings are designed to ensure good fish welfare during transport, with a high focus on safety and ease of use.

A PS-coupling makes it very easy to connect transport hoses or transport pipes in connection with the transport of fish and water. The PS-couplings can be rotated to a custom size regardless of dimension and is available as a female and male coupler in complete sets or as individual couplings.

When transporting fish, the PS-coupling is placed on the hose that leads the fish forward where it is to be used for sorting, vaccination or delivery. All PS-couplings have a polyethylene lock with stainless steel clamp. The lock is designed with a groove on the inside so that it overlaps the flange on both pipe parts. The lock is designed so that it will not be possible to open the clip accidentally, which adds extra security when transporting fish.



Our standard dimensions:

- Ø75 mm
- Ø90 mm
- Ø110 mm
- Ø125 mm
- Ø160 mm
- Ø200 mm
- Ø225 mm
- Ø250 mm
- Ø280 mm
- Ø315 mm

We also supply customized couplings and transitions between different dimensions for all PS-couplings.